

臺中市政府衛生局 函

地址：420206臺中市豐原區中興路136號
承辦人：衛生企劃員 林宜瑩
電話：04-22289111分機70254
傳真：04-25263401
電子信箱：hbtcm00483@taichung.gov.tw

受文者：社團法人臺中市大臺中醫師公會

發文日期：中華民國115年4月14日

發文字號：中市衛保字第1150041131號

速別：普通件

密等及解密條件或保密期限：

附件：請至附件下載區 (<https://annexf.hbtc.gov.tw?C=H1BDat>) 以文號：
141150041131及認證碼：66E4PA下載附件檔案

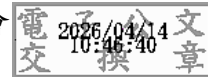
主旨：函轉高雄醫學大學辦理「第三屆全球口腔癌論壇（GOCF
2026）」提供免註冊費名額，請貴單位鼓勵所屬相關人員
踴躍報名參加，請查照。

說明：

- 一、依據衛生福利部115年4月9日衛部口字第1150114038號函辦理。
- 二、檢附論壇相關資訊1份，如有相關問題，請逕洽高雄醫學大學，承辦人胡林耀先生，電話：07-3121101分機2159，
Email：joshua89514@gmail.com。

正本：本市口腔癌確診斷及治療醫院

副本：社團法人臺中市醫師公會、社團法人臺中市大臺中醫師公會、台中市診所協會、
臺中市台中都診所協會、社團法人臺中市大臺中診所協會



高雄醫學大學 函

地址：80708高雄市三民區十全一路100號
承辦人：鄭怡秀
電話：(07)3121101分機2209再轉31
傳真電話：(07)3157024
電子信箱：ihcheng@kmu.edu.tw

受文者：衛生福利部

發文日期：中華民國115年3月30日
發文字號：高醫院口字第1151100974號
速別：普通件
密等及解密條件或保密期限：
附件：第三屆全球口腔癌論壇議程表 (1151100974-1.pdf)

主旨：本校口腔衛生學系辦理「第三屆全球口腔癌論壇（GOCF 2026）」提供免註冊費名額，敬請鈞部協助轉知所屬相關單位承辦人員報名參加，請查照。

說明：

- 一、本校口腔衛生學系為促進口腔癌照護相關之跨領域臨床實務、專業教育與學術研究交流，訂於 2026年5月30日（星期六）至5月31日（星期日），假本校國際會議中心舉辦「第三屆全球口腔癌論壇（GOCF 2026）」。
- 二、「第三屆全球口腔癌論壇（GOCF 2026）」以「賦能變革：推進口腔癌知識與建立合作夥伴關係」為主題，旨在促進全球口腔癌預防篩檢，口腔癌防治與研究經驗之交流與連結，並透過分享各國推動之策略、實務計畫與創新技術，強化跨專業及跨部門合作，提升口腔健康照護之可近性與品質。
- 三、鑒於鈞部推動國內口腔健康促進、口腔癌症防治業務，特函惠請貴單位協助轉知所屬相關人員踴躍參與，會議現場

總收文 115.03.30



1150114038

備有同步即時字幕翻譯，由主辦單位提供30名免註冊費名額，名額有限依報名順序額滿為止。

四、相關資訊（含報名、徵稿及最新公告）請參閱官方網站

<https://2026gocf.com/>，報名方式逕向承辦人胡林耀先生

聯繫，電話：07-3121101分機2159、E-

mail: joshua89514@gmail.com。

正本：衛生福利部

副本：本校口腔衛生學系



校長余明隆

本案依分層負責規定授權單位主管決行

裝

訂

線



2026 The 3rd Global Oral Cancer Forum (GOCF) Conference

Day 1 / May 30, 2026 Program

start	end	Topic	Speaker	Moderator
09:00	09:30	Opening ceremony	GOCF Co-Chairs: Saman Warnakulasuriya, Ross Kerr, WM Tilakaratne Taiwan delegates: (TBD)	
09:30	09:40	Group photo		
Symposium 1: Natural history and delays in diagnosis				
09:40	10:10	Dysplasia grading systems and their clinical utility	WM Tilakaratne Professor, Faculty of Dentistry, University of Malaya, Malaysia	Saman Warnakulasuriya Emeritus professor and Fellow, King's College London, UK Li-Tzong Chen Distinguished professor, Center for Cancer Research, Kaohsiung Medical University, Taiwan
10:10	10:40	Natural history of OPMDs- an insight from the Taiwanese cohort	Anil Chaturvedi Senior Investigator, Division of Cancer Epidemiology and Genetics, US National Cancer Institute, USA	
10:40	10:55	Coffee break		
10:55	11:25	Malignant transformation of OPMDs	Miguel Ángel González Moles Professor, Faculty of Dentistry at the University of Granada, Spain	WM Tilakaratne Professor, Faculty of Dentistry, University of Malaya, Malaysia Yi-Hsin Connie Yang Investigator, National Institute of Cancer Research, National Health Research Institutes, Taiwan
11:25	11:55	Navigating AI in OPMD diagnosis and trajectories to malignancy?	Rui Amaral Mendes Professor, Faculty of Medicine, The University of Porto, Portugal	
11:55	12:25	Delays in diagnosis in primary and secondary care	Saman Warnakulasuriya Emeritus professor and Fellow, King's College London, UK	
12:25	12:30	Discussion		
12:30	14:00	Lunch Symposium (sponsored) UFUR maintenance in HNSCC	Hui-Ching Wang Associated Professor, Graduate Institute of Clinical Medicine, Kaohsiung Medical University, Taiwan	Pen-Yuan Chu Professor, Department of Otorhinolaryngology-Head and Neck Surgery, Taipei Veterans General Hospital, Taiwan
Symposium 2: Oral Cancer Screening				
14:00	14:30	Oral cancer screening	Ross Kerr Professor, New York University College of Dentistry, USA	Sok Ching Cheong Chief Scientific Officer, Cancer Research Malaysia, Malaysia Sam Li-Sheng Chen Deputy Dean & Professor, College of Oral Medicine, Taipei Medical University, Taiwan
14:30	14:50	Precision Oral Cancer Screening: Insights from the Taiwan Initiative	Tony Hsiu-Hsi Chen Professor, Institute of Health Data Analytics and Statistics, College of Public Health, National Taiwan University, Taiwan	
14:50	15:10	The impact of the pandemic on oral cancer screening- a real-world data from Taiwan	Pei-Shan Ho Professor, Department of Oral Hygiene, College of Dental Medicine, Kaohsiung Medical University, Taiwan	
15:10	15:25	Coffee break		
15:25	15:45	Rapid oral cancer risk stratification using MAC artificial intelligence	Shyh-Jye Chen Professor & Chairman, Medical Imaging, College of Medicine, National Taiwan University, Taiwan	Ross Kerr Professor, New York University College of Dentistry, USA Ko-Jiunn Liu Investigator, National Institute of Cancer Research, National Health Research Institutes, Taiwan
15:45	16:15	Calibration and standardization for oral cancer screening training	Rosnah Binti Mohd Zain Deputy Vice Chancellor, Research, Innovation, and Enterprise at MAHSA University, Malaysia	
16:15	16:35	Evolution of Community-Based Oral Cancer Screening Training in Taiwan	Wen-Chen Wang Associate Professor, College of Dental Medicine, Department of Oral Pathology Oral & Maxillofacial Image Center, Kaohsiung Medical University, Taiwan	
16:35	16:55	Discussion		
18:30	Gala dinner			

2026 The 3rd **Global Oral Cancer Forum (GOCF) Conference**

Day 2 / May 31, 2026 Program

start	end	Topic	Speaker	Moderator
Symposium 3: Pathology and molecular science				
09:00	09:30	Pathological and molecular features of Asian oral cancers – an international registration MASTERKEY study	Taisuke Mori Professor, Department of Diagnostic Pathology, National Cancer Center Hospital, Japan	Saman Warnakulasuriya Emeritus professor and Fellow, King's College London, UK Pei-Jen Lou Distinguished Professor, Department of Otolaryngology, National Taiwan University College of Medicine, Taiwan
09:30	09:50	Genomic Landscape of Oropharyngeal Cancer and Implications for Clinical Practice	Shang-Hung Chen Assistant Investigator, National Institute of Cancer Research, National Health Research Institutes, Taiwan	
09:50	10:20	Therapeutic targets for OSCC	Sok Ching Cheong Chief Scientific Officer, Cancer Research Malaysia, Malaysia	
10:20	10:35	Panel Discussion		
Symposium 4: Risk factors and oral cancer control				
10:35	10:55	Taiwan oral cancer control policy and progress	Yung-Ming Chang Director, Department of Oral Health, Ministry of Health and Welfare, Taiwan	Rosnah Binti Mohd Zain Deputy Vice Chancellor, Research, Innovation, and Enterprise at MAHSA University, Malaysia Hung-Yi Chiou Distinguished Investigator and Director, Institute of Population Health Sciences, National Health Research Institutes, Taiwan
10:55	11:15	Developing polygenic risk score for risk stratification of oral cancer	Shih-Sheng Jiang Associate Investigator, National Institute of Cancer Research, National Health Research Institutes, Taiwan	
11:15	11:30	Coffee break		
11:30	11:50	Theories and Practices on the Development of Various Models of Betel Quid Cessation Techniques in Taiwan	Ming-Shinn Lee Professor, Department of Education and Human Potential Development, National Dong-Hua University, Taiwan	Mu-Kuan Chen Superintendent, Changhua Christian Hospital, Advisor, Taiwan Society of Otorhinolaryngology Head and Neck Surgery, Taiwan Yan-Hsiung Wang Professor, School of Dentistry, College of Dental Medicine, Kaohsiung Medical University, Taiwan
11:50	12:20	Update on Multidisciplinary management of locally advanced oral cancer	Pankaj Chaturvedi Professor, Department of Head and Surgery, Tata Memorial Hospital, India	
12:20	12:30	Discussion		
12:30	14:00	Lunch Symposium (sponsored) Reconstruction of Oral Tumors with Fibula Flap: Experience from Kaohsiung Medical University Hospital	Chang-Wei Su Attending Physician, Division of Oral and Maxillofacial Surgery, Kaohsiung Medical University Hospital, Taiwan	Han-Jen Hsu Chief, Division of Oral and Maxillofacial Surgery, Kaohsiung Medical University Hospital, Taiwan
Symposium 5: Disease Management				
14:00	14:30	Alcohol Intolerance & Cancer Awareness Program	Che-Hong Chen Senior Research Scientist, School of Medicine, Stanford University, USA	Miguel Ángel González Moles Professor, Faculty of Dentistry at the University of Granada, Spain Sheng-Po Hao Professor, Department of Otolaryngology-Head & Neck Surgery, Shin Kong Wu Ho-Su Memorial Hospital, Taiwan
14:30	15:00	A comparison of national and professional guidelines for the management of oral cancer	Mitsuo Goto Professor and Chair, Department of Oral and Maxillofacial Surgery, Aichi Gakuin University, Japan	
15:00	15:15	Coffee break		
15:15	15:35	Risk Classification of Oral Cancer Surgical Margins: Margin to Depth of invasion ratio Analysis	Tseng-Cheng Chen Professor, College of Medicine, National Taiwan University, Taiwan	Yi-Shing Leu Assistant Professor, Head Neck Surgeon, MacKay Medical University, Taiwan Edward Chengchuan Ko, Associate Professor, Division of Oral and Maxillofacial Surgery, Kaohsiung Medical University, Taiwan
15:35	15:50	Management of oral leukoplakia	Giovanni Lodi Professor, Università degli Studi di Milano, Italy	
15:50	16:20	Discussion		
16:20	16:50	Grand Debate Chair: Profs Ross Kerr and Saman Warnakulasuriya		
16:50	17:15	Closing ceremony		